

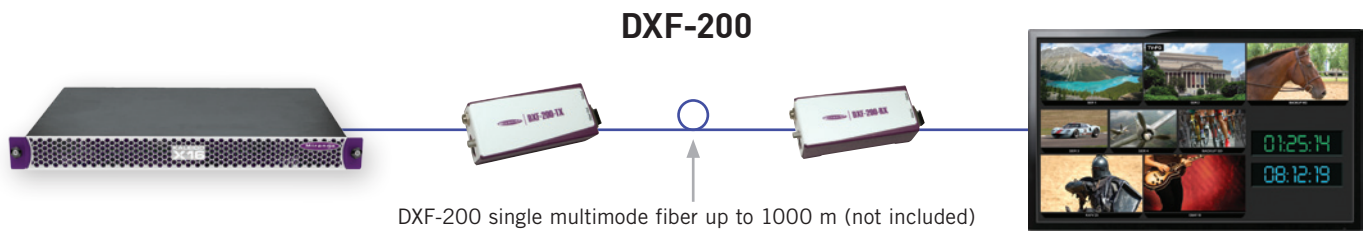
DXF-200

Optical extension system for DVI and HDMI



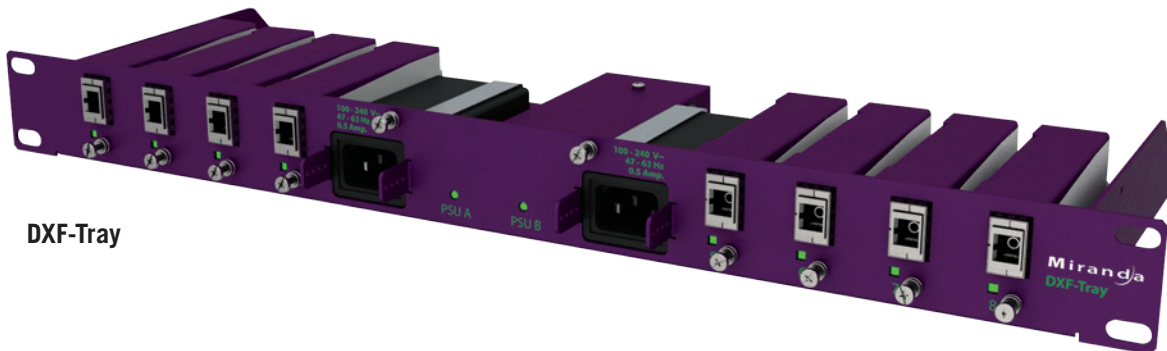
The DXF-200 DVI/HDMI optical extension system allows the interconnection between any DVI/HDMI device and a display over distances of up to 1000 meters without any loss of signal integrity. It consists of small transmitter and receiver modules that are connected with a single multimode fiber. The DXF-200 offers automatic EDID detection. Devices supporting EDID will be able, amongst other things, to offer the best picture quality by reading the native resolution of the display. The DXF-200 comes with a

multi-status LED which is perfect to troubleshoot both cable and fiber connectivity problems. A rack mounted tray supporting up to 8 DXF-200 transmitters or receivers is also available. The DXF-200-Tray comes with redundant power supplies and is perfectly adapted for installation at the back of a rack, conserving rack space while offering a robust installation for DXF-200 modules.



KEY FEATURES AND BENEFITS

- Multimode fiber with SC connector (50/125 um or 62.5/125 um)
- Maximum distance up to 1000 m (3300 ft)
- Provides EDID detection from the display allowing automatic resolution adjustment
- Multi-status LED for easy fiber and cable troubleshooting
- Tray option for rack mount installation of up to 8 units
- PSU redundancy through the use of the DXF-Tray
- DXF-Tray also provide GPI output status for PSU failure



ORDERING INFORMATION

DXF-200-A	DVI/HDMI Optical Extension System with cables for DVI devices (for Kaleido-X)
DXF-200-B	DVI/HDMI Optical Extension System with cables for HDMI devices with lock (for Kaleido-X16)
DXF-200-C	DVI/HDMI Optical Extension System with cables for HDMI devices with no lock (for Kaleido-Modular and Kaleido-IP)
DXF-200-PSU	DXF-200 Power Supply (1 x sub-module), two are required for each Optical Extension System
DXF-TRAY	8 DXF-200 TX or RX Module Tray with Redundant PSU

Each DXF-200 Optical Extension System comes with cables for appropriate connection to the different multi-viewers. A PSU is required on both transmitting and receiving ends. PSUs are included with the DXF-TRAY.

Stereoscopic 3D support across Baseband multi-viewers

All Kaleido Baseband multi-viewers offer 3Gbps/HD/SD performance, with Stereoscopic 3D support (Dual Link 1.5Gbps, SMPTE-292M) when used with standard stereoscopic displays. By using high quality Stereoscopic 3D monitoring during production, an operator can fully assess the quality and compare perspectives before switching between two Stereoscopic 3D cameras.

Using a Kaleido multi-viewer for Stereoscopic 3D production monitoring

