

EDUCATIONAL SERVICES

MIRANDA TECHNOLOGIES

Educational Services



[COURSE CATALOGUE 2011]

The Educational Services Department offers a wide variety of classes for Users of Miranda products to follow. Miranda employs more than 600 people worldwide Our head office is in Montreal with facilities in the UK, in France, in the US, Japan, Dubai, Hong Kong and mainland China. Miranda is listed at the Toronto Stock Exchange – TSX – symbol MT.

Contents

LOCATIONS OF TRAINING CLASSES.....	4
Class room Training.....	4
On-site Instruction	4
CLASS-ROOM LOGISTIC STIPULATIONS.....	5
CLASS-ROOM REQUIREMENTS (if training is done at client site)	5
CLASS-ROOM RULES	5
INFORMATION ABOUT LEVELS OF TRAINING CLASSES.....	6
OPERATOR LEVEL (Primary) 101,102 classes.....	6
ADMINISTRATOR LEVEL (Secondary) 201, 202, 203 classes.....	6
MAINTENANCE LEVEL (Tertiary) 301, 302, 303 classes	7
INTEGRATOR-LEVEL (Quaternary) 405 and 505 classes	7
(KALX101) KALEIDO-X OPERATION	8
(KALX202) KALEIDO-X ADMINISTRATION	9
(KALX302) KALEIDO-X MAINTENANCE.....	10
(KALX405) KALEIDO-X INTEGRATION	11
(ICON101) ICONTROL WEB AND NAVIGATOR OPERATION	12
(ICPM101) ICONTROL PM OPERATION	13
(ICRS101) ICONTROL RSM OPERATION.....	14
(ICED101) ICONTROL EDGE OPERATION.....	15
(ICQC101) ICONTROL QC OPERATION	16
(ICKX101) ICONTROL KX SUPERVISE OPERATION	17
(ICON202) ICONTROL ADMINISTRATION.....	18
(ICON302) ICONTROL MAINTENANCE	19
(ICON405) ICONTROL INTEGRATION	20
(ICON502) ICONTROL WEB PAGE CREATION	21
(ICON505) ICONTROL WEB PAGE INTEGRATION	22
Miranda iTX Operator	23
Miranda iTX Maintenance.....	24
(OXTE101) OXTEL MASTERCONTROL OPERATION.....	25

(OXTE202) OXTEL ADMINISTRATION	26
(OXTE302) OXTEL MAINTENANCE	27
(OXTE405) OXTEL INTEGRATION.....	28
(VERT101) VERTIGO XPLOER and XPLAY OPERATION	29
(VERT202) VERTIGO SOFTWARE CONTENT ENTRY	30
(VERT303a) XSTUDIO CONTENT CREATIONFOR ARTISTS	31
(VERT303m) VERTIGO Maintenance.....	32
(VERT405) VERTIGO INTEGRATION.....	33
(NVRT101) NVISION ROUTER CONTROL PANEL OPERATION	34
(NRTC302) NVISION ROUTER MAINTENANCE	35
(NVRT405) NVISION ROUTER CONTROL INTEGRATION.....	36
(NVMC101) NVISION MASTERCONTROL OPERATION	37
(NVMC302) NVISION NV5100mc MAINTENANCE	38
(NVMC405) NVISION MASTER CONTROL INTEGRATION	39
(MIRA101) Miranda Introduction to products.....	40

LOCATIONS OF TRAINING CLASSES

Class room Training

The concept involves inviting Clients to Miranda Technologies Inc Headquarters in Montréal Quebec in-order to provide “Factory Training”

Some of the benefits to Factory training

- provides students with hands-on experience in a controlled environment
- In-class demonstrations to hands-on-labs,
- Provides dynamic learning and can be flexible based on questions asked.
- Can be customized to suit clients application and equipment
- Possibility of Guest Speakers (engineers, Product Developers, etc)
- Factory tours and introductions

The targets for this training system are...

- System Integrators
- Engineering Management
- Pre-Sales Demonstrational Training
- Pre-Install Training

On-site Instruction

The concept involves visiting Clients at their location to provide private instruction to larger groups

Some of the benefits to On Site training

- Done directly at the Client’s site
- Designed to maximize the learning experience
- Suit the specific needs client’s Implementation
- Ability to train larger groups (multiple shifts)
- Training with the clients equipment and application
- Provides opportunity to fine-tune the equipment (post-install)

The targets for this training system are...

- Clients with Large groups (multiple shifts)
- System Integrators awaiting handover
- Upgrade Clients that need specific information

CLASS-ROOM LOGISTIC STIPULATIONS

CLASS-ROOM REQUIREMENTS (if training is done at client site)

In-order for the training to be successful the Trainer will require the following:

- **A maximum of 6 students per class is accepted.** If you have more than 6 students we will repeat the training to multiple groups
- A room that is large enough to seat a MAXIMUM of six (6) people in class-room (rows) or round table seating.
- If equipment is to be sent to the training location...The room should have a minimum of three (3) 15 amp 110V electrical circuits.
- A projector with a minimum resolution of 1024 X 768 for presentation
- A Presentation screen that has a minimum size of 2 meters diagonal (may be larger depending on the room selected)
- A white-board or large paper flip chart in order to draw explanations (may be optional)
- If possible...every student should have access to the equipment for the hands on portion of training

CLASS-ROOM RULES

A minimum set of rules are ...

- No Cellular Phones allowed
- There will be no access to Emails or Internet in the classroom
- Students are required to sign the attendance sheet and fill in the evaluation forms.

INFORMATION ABOUT LEVELS OF TRAINING CLASSES

OPERATOR LEVEL (Primary) 101,102 classes

This level of training is the most basic. This level is meant for new users of Miranda products who wish to understand the user functions. Can be offered at Miranda or on site

- Primary level of training
- Available on a per-product line basis
- Assumes no prior knowledge of Subject
- Available onsite before or after install (pre-install involves presentations exclusively due to the lack of equipment on site)
- Duration 1 to 2 days depending on the class
- (If Requested) Upon successful completion of the class each student will receive a certificate

ADMINISTRATOR LEVEL (Secondary) 201, 202, 203 classes

This level of training is available for more advanced users. Classes can be offered at Miranda or on site.

- Secondary level of training
- Designed for managers and Supervisors
- Available on a per-product line basis
- Assumes Basic User knowledge of Equipment
- Available onsite after install
- Duration 1-3 day's
- (If Requested) Upon successful completion of the class each student will receive a certificate

MAINTENANCE LEVEL (Tertiary) 301, 302, 303 classes

This level of training is available for more advanced users in order to maintain Miranda equipment. Classes can be offered at Miranda or on site.

- Tertiary level of training
- Designed for Maintenance personnel
- Available on a per-product line basis
- Assumes Basic knowledge of Equipment But does not require operational knowledge
- Available onsite after install
- Duration 1-3 day's
- (If Requested) Upon successful completion of the class each student will receive a certificate

INTEGRATOR-LEVEL (Quaternary) 405 and 505 classes

This level of training is for the most advanced users. This class is only available as a class room (at Miranda Headquarters)

- Quaternary level of training
- Available on a per-product line basis
- Assumes Operational and Maintenance knowledge of Equipment
- Designed for system integrators and installers
- Provides in-depth training (same as given internally to Miranda Employees)
- Available at Miranda Headquarters exclusively
- Duration 5 to10 day's
- Should not immediately follow Entry level (basic) training
- May not be available for Prod & Post Prod Interfaces
- (If Requested) Upon successful completion of the class each student will receive a certificate

(KALX101) KALEIDO-X OPERATION



This course introduces the Kaleido X user to the operations of the system. It allows an operator to manipulate the displayed layouts to better suit the needs in a moment's notice.

- **Length:** 7 hours (one day)
- **Prerequisite:** None
- **Applies to:** : Kaleido X16 KMV FR4 and FR7
- **Versions :** Kaleido-X V4.0 and up



GOALS

After completing this course you will be able to:

- Understand the physical components of the Kaleido X system
- Logging on to the Monitor Wall Using the Kaleido-RCP2.
- Displaying and Hiding the Dashboard
- Loading a Layout by using the RCP2
- Displaying a Source in Full Screen Mode
- Editing UMD Text from the RCP
- Changing router cross points (if available)
- Use countdown/up timers
- Use the Audio monitoring functions

ABOUT THIS COURSE

This course includes the following materials:

- All current User manuals (PDF)
- Course Material (Printed)
- Final Exam and Quizzes (Printed)
- Training Evaluation (Printed)
- Exercises and handouts (Printed)
- Hands on and Practical exercises

This class does not cover the following

- Kaleido XEdit layout editor (The ability to create custom user layouts)
- Maintenance or administration of the system
- Trouble shooting, problem solving or reading of system log files
- Integration of new software or hardware into an existing system

(KALX202) KALEIDO-X ADMINISTRATION



This course introduces the Kaleido X user to the administration of the system. It allows an administrator to manipulate the displayed layouts and to make complex changes to their graphical layout

- **Length:** 14 hours (Two Days)
- **Prerequisite:** KALX101
- **Applies to:** : Kaleido X16 KMV FR4 and FR7
- **Versions :** Kaleido-X V4.0 and up



GOALS

After completing this course you will be able to:

- Understand the physical components of the Kaleido X system
- Using X-Edit software
- Creating Channels and Layouts
- Creating full screen zones
- Creating Actions and alarms
- Saving and configuring KX Databases
- Managing Multiple Databases
- Creating and managing multiple user accounts

ABOUT THIS COURSE

This course includes the following materials:

- All current User manuals (PDF)
- Course Material (Printed)
- Final Exam and Quizzes (Printed)
- Training Evaluation (Printed)
- Exercises and handouts (Printed)
- Hands on and Practical exercises

*This class does **not** cover the following*

- Operation of the system
- Maintenance of the system
- Trouble shooting, problem solving or reading of system log files
- Integration of new software or hardware into an existing system

(KALX302) KALEIDO-X MAINTENANCE



This course introduces the Kaleido X user to the maintenance of the system. It allows a maintenance engineer to ensure that the Kaleido X system is serviced for proper functionality and reliability

- **Length:** 14 hours (Two Days)
- **Prerequisite:** KALX202
- **Applies to:** : Kaleido X16 KMV FR4 and FR7
- **Versions:** : Kaleido-X V4.0 and up



GOALS

After completing this course you will be able to:

- Understand the physical components of the Kaleido X system
- Using X-ADMIN software
- Creating Database Backups
- Backing up the system (complete)
- Restoring a backup file
- Saving and configuring KX Databases
- Upgrading a system
- Finding and reading log files

ABOUT THIS COURSE

This course includes the following materials:

- All current User manuals (PDF)
- Course Material (Printed)
- Final Exam and Quizzes (Printed)
- Training Evaluation (Printed)
- Exercises and handouts (Printed)
- Hands on and Practical exercises

*This class does **not** cover the following*

- Operation of the system
- Administration or Layout configuration
- Integration of new hardware into an existing system

(KALX405) KALEIDO-X INTEGRATION



This course introduces the Kaleido X user to the integration of the system. It allows an integration engineer to ensure that the Kaleido X system is properly installed, used and serviced for reliability

- **Length:** 35 hours (Five Days)
- **Prerequisite:** KALX202 and KALX302
- **Applies to:** Kaleido X16 KMV FR4 and FR7
- **Versions :** Kaleido-X V4.0 and up



GOALS

After completing this course you will be able to:

- Understand the physical components of the Kaleido X system
- Operating the Monitor Wall Using the Kaleido-RCP2.
- Using X-Edit software
- Using X-ADMIN software
- Backing up the system (complete)
- Restoring a backup file
- Saving and configuring KX Databases
- Upgrading a system
- Finding and reading log files
- Hands on Set up of a system
- Hands on troubleshooting
- Hands on Problem solving

ABOUT THIS COURSE

This course includes the following materials:

- All current User manuals (PDF)
- Course Material (Printed)
- Final Exam and Quizzes (Printed)
- Training Evaluation (Printed)
- Exercises and handouts (Printed)
- Hands on and Practical exercises

This is a complete class that covers installation and use of Kaleido X system. There are typically one or two days of theory and 3 days of practical hands on time. It is only available at Miranda Technologies Corporate headquarters in Montreal Quebec Canada

(ICON101) ICONTROL WEB AND NAVIGATOR OPERATION



This course introduces the IControl user to the operations of the system. It allows an operator to manipulate IControl web viewer and IControl Navigator applications

- **Length:** 7 hours (one day)
- **Prerequisite:** None
- **Applies to:** IControl Solo or Appserver
- **Versions :** IControl V3.0 and up



GOALS

After completing this course you will be able to:

- Understand the physical components of the IControl System
- Using IControl Navigator
- Opening a control panel for cards
- Viewing event log files
- Exporting event log files
- Setting parameters on card interfaces
- Exploring GSM and its features
- Understanding the IControl Web viewer
- Monitoring your system with ICWeb
- Basic operational functionality

ABOUT THIS COURSE

This course includes the following materials:

- All current User manuals (PDF)
- Course Material (Printed)
- Final Exam and Quizzes (Printed)
- Training Evaluation (Printed)
- Exercises and handouts (Printed)
- Hands on and Practical exercises

This class does not cover the following

- IControl Web layout editor (The ability to create custom user layouts)
- IControl Router Configuration
- Maintenance or administration of the system
- Trouble shooting, problem solving or reading of system log files
- Integration of new software or hardware into an existing system

(ICPM101) ICONTROL PM OPERATION



This course introduces the IControl user to the operations of the “Payout Monitoring” system. It allows an operator to manipulate IControl web viewer and IControl Navigator applications inside of PM

- **Length:** 7 hours (one day)
- **Prerequisite:** None
- **Applies to:** IControl PM Appserver
- **Versions :** IControl PM V3.0 and up



GOALS

After completing this course you will be able to:

- Understand the physical components of the IControl “PM” System
- Using IControl Navigator
- Opening a control panel for cards
- Viewing event log files
- Exporting event log files
- Setting parameters on card interfaces
- Using the Spreadsheet to make system changes
- Exploring GSM and its features
- Understanding the IControl Web viewer
- Monitoring your system with ICWeb
- Basic operational functionality

ABOUT THIS COURSE

This course includes the following materials:

- All current User manuals (PDF)
- Course Material (Printed)
- Final Exam and Quizzes (Printed)
- Training Evaluation (Printed)
- Exercises and handouts (Printed)
- Hands on and Practical exercises

This class does not cover the following

- IControl Web layout editor (The ability to create custom user layouts)
- IControl Router Configuration
- Maintenance or administration of the system
- Trouble shooting, problem solving or reading of system log files
- Integration of new software or hardware into an existing system

(ICRS101) ICONTROL RSM OPERATION



This course introduces the IControl user to the operations of the “Remote site Monitoring” system. It allows an operator to manipulate IControl web viewer and IControl Navigator applications inside of RSM

- **Length:** 7 hours (one day)
- **Prerequisite:** None
- **Applies to:** IControl RSM Appserver
- **Versions :** IControl RSM V3.0 and up



GOALS

After completing this course you will be able to:

- Understand the physical components of the IControl “RSM” System
- Using IControl Navigator
- Opening a control panel for cards
- Viewing event log files
- Exporting event log files
- Setting parameters on card interfaces
- Using the Spreadsheet to make system changes
- Exploring GSM and its features
- Understanding the IControl Web viewer
- Monitoring your system with ICWeb
- Basic operational functionality

ABOUT THIS COURSE

This course includes the following materials:

- All current User manuals (PDF)
- Course Material (Printed)
- Final Exam and Quizzes (Printed)
- Training Evaluation (Printed)
- Exercises and handouts (Printed)
- Hands on and Practical exercises

This class does not cover the following

- IControl Web layout editor (The ability to create custom user layouts)
- IControl Router Configuration
- Maintenance or administration of the system
- Trouble shooting, problem solving or reading of system log files
- Integration of new software or hardware into an existing system

(ICED101) ICONTROL EDGE OPERATION



This course introduces the IControl user to the operations of the “EDGE” system. It allows an operator to manipulate IControl web viewer and IControl Navigator applications inside of EDGE

- **Length:** 7 hours (one day)
- **Prerequisite:** None
- **Applies to:** IControl EDGE Appserver
- **Versions :** IControl EDGE V3.0 and up



GOALS

After completing this course you will be able to:

- Understand the physical components of the IControl “EDGE” System
- Using IControl Navigator
- Opening a control panel for cards
- Viewing event log files
- Exporting event log files
- Setting parameters on card interfaces
- Using the Spreadsheet to make system changes
- Exploring GSM and its features
- Understanding the IControl Web viewer
- Monitoring your system with ICWeb
- Basic operational functionality

ABOUT THIS COURSE

This course includes the following materials:

- All current User manuals (PDF)
- Course Material (Printed)
- Final Exam and Quizzes (Printed)
- Training Evaluation (Printed)
- Exercises and handouts (Printed)
- Hands on and Practical exercises

This class does not cover the following

- IControl Web layout editor (The ability to create custom user layouts)
- IControl Router Configuration
- Maintenance or administration of the system
- Trouble shooting, problem solving or reading of system log files
- Integration of new software or hardware into an existing system

(ICQC101) ICONTROL QC OPERATION



This course introduces the IControl user to the operations of the “Quality Control” system. It allows an operator to manipulate IControl web viewer and IControl Navigator applications inside of QC

- **Length:** 7 hours (one day)
- **Prerequisite:** None
- **Applies to:** IControl QC Appserver
- **Versions :** IControl QC V3.0 and up



GOALS

After completing this course you will be able to:

- Understand the physical components of the IControl “QC” System
- Using IControl Navigator
- Opening a control panel for cards
- Viewing event log files
- Exporting event log files
- Setting parameters on card interfaces
- Using the Spreadsheet to make system changes
- Exploring GSM and its features
- Understanding the IControl Web viewer
- Monitoring your system with ICWeb
- Basic operational functionality

ABOUT THIS COURSE

This course includes the following materials:

- All current User manuals (PDF)
- Course Material (Printed)
- Final Exam and Quizzes (Printed)
- Training Evaluation (Printed)
- Exercises and handouts (Printed)
- Hands on and Practical exercises

*This class does **not** cover the following*

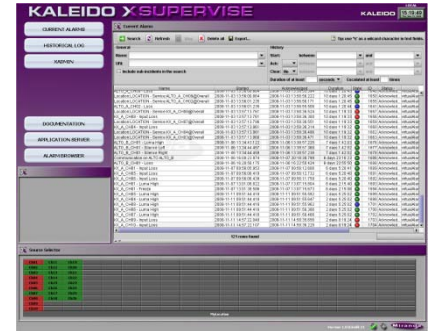
- IControl Web layout editor (The ability to create custom user layouts)
- IControl Router Configuration
- Maintenance or administration of the system
- Trouble shooting, problem solving or reading of system log files
- Integration of new software or hardware into an existing system

(ICKX101) ICONTROL KX SUPERVISE OPERATION



This course introduces the IControl user to the operations of the “KX SUPERVISE” system. It allows an operator to manipulate IControl web viewer applications inside of KX-SUPERVISE

- **Length:** 7 hours (one day)
- **Prerequisite:** None
- **Applies to:** IControl Appserver and KX
- **Versions :** IControl V3.0, KX V4.0 and up



GOALS

After completing this course you will be able to:

- Understand the physical components of the IControl “KX-SUPERVISE” System
- Viewing event log files
- Exporting event log files
- Setting parameters on card interfaces
- Using the Spreadsheet to make system changes
- Exploring GSM and its features
- Understanding the IControl Web viewer
- Monitoring your system with ICWeb
- Basic operational functionality

ABOUT THIS COURSE

This course includes the following materials:

- All current User manuals (PDF)
- Course Material (Printed)
- Final Exam and Quizzes (Printed)
- Training Evaluation (Printed)
- Exercises and handouts (Printed)
- Hands on and Practical exercises

This class does not cover the following

- IControl Web layout editor (The ability to create custom user layouts)
- IControl Router Configuration
- Maintenance or administration of the system
- Trouble shooting, problem solving or reading of system log files
- Integration of new software or hardware into an existing system

(ICON202) ICONTROL ADMINISTRATION



This course introduces the IControl user to the administration of the system. It allows understanding of IControls more complex features including user access and spreadsheet manipulation

- **Length:** 16 hours (Two days)
- **Prerequisite:** ICON101
- **Applies to:** IControl Appserver
- **Versions :** IControl V3.0 and up



GOALS

After completing this course you will be able to:

- Understand the physical components of the IControl System
- Creating IControl User accounts
- Allowing access to control panel for cards
- Viewing event log files
- Exporting event log files
- Allowing access to parameters on card interfaces
- Exploring GSM and its features
- Monitoring the use of IControl Web
- GSM and other service configuration
- Spreadsheet manipulation for ICWeb

ABOUT THIS COURSE

This course includes the following materials:

- All current User manuals (PDF)
- Course Material (Printed)
- Final Exam and Quizzes (Printed)
- Training Evaluation (Printed)
- Exercises and handouts (Printed)
- Hands on and Practical exercises

*This class does **not** cover the following*

- IControl Web layout editor (The ability to create custom user layouts)
- IControl Router Configuration
- Trouble shooting, problem solving or reading of system log files
- Integration of new software or hardware into an existing system

(ICON302) ICONTROL MAINTENANCE



This course introduces the IControl user to the maintenance of the system. It allows understanding of how to prepare redundant configurations and ensure the proper functionality of the system

- **Length:** 14 hours (Two days)
- **Prerequisite:** ICON202
- **Applies to:** IControl Appserver
- **Versions :** IControl V3.0 and up



GOALS

After completing this course you will be able to:

- Understand the physical components of the IControl System
- Use and understand WEBMIN interface
- Creating Database and Web Page Backups
- Backing up the system (complete)
- Restoring a backup file
- Upgrading a system
- Finding and reading system log files
- Deep understanding of GSM and JLUS
- Troubleshooting tips and tricks

ABOUT THIS COURSE

This course includes the following materials:

- All current User manuals (PDF)
- Course Material (Printed)
- Final Exam and Quizzes (Printed)
- Training Evaluation (Printed)
- Exercises and handouts (Printed)
- Hands on and Practical exercises

This class does not cover the following

- Operation of the system
- IControl Web layout editor (The ability to create custom user layouts)
- IControl Router Configuration

(ICON405) ICONTROL INTEGRATION



This course introduces the IControl user to the integration of the system. It allows an integration engineer to ensure that the IControl system is properly installed, used and serviced for reliability

- **Length:** 35 hours (Five days)
- **Prerequisite:** ICON202 and ICON302
- **Applies to:** IControl Appserver
- **Versions :** IControl V3.0 and up



GOALS

After completing this course you will be able to:

- Understand the physical components of the IControl System
- Operating the system
- Creating user accounts
- Allowing access to parameters
- Use and understand WEBMIN interface
- Creating Database and Web Page Backups
- Backing up the system (complete)
- Restoring a backup file
- Upgrading a system
- Finding and reading system log files
- Deep understanding of GSM and JLUS
- Troubleshooting tips and tricks

ABOUT THIS COURSE

This course includes the following materials:

- All current User manuals (PDF)
- Course Material (Printed)
- Final Exam and Quizzes (Printed)
- Training Evaluation (Printed)
- Exercises and handouts (Printed)
- Hands on and Practical exercises

This is a complete class that covers installation and use of an IControl system. There are typically one or two days of theory and 3 days of practical hands on time. It is only available at Miranda Technologies Corporate headquarters in Montreal Quebec Canada

(ICON502) ICONTROL WEB PAGE CREATION



This course introduces the IControl user to the creation of IControl web pages. It allows an operator to use IControl Web Creator software to create, modify and test custom designed web pages

- **Length:** 14 hours (two days)
- **Prerequisite:** None
- **Applies to:** IControl Appserver
- **Versions :** IControl V3.0 and up



GOALS

After completing this course you will be able to:

- Understand the physical components of the IControl System
- Create web pages and Sites
- Create basic custom WebPages
- Use basic GUI functions in ICW
- Troubleshooting tips and tricks

ABOUT THIS COURSE

This course includes the following materials:

- All current User manuals (PDF)
- Course Material (Printed)
- Final Exam and Quizzes (Printed)
- Training Evaluation (Printed)
- Exercises and handouts (Printed)
- Hands on and Practical exercises

This class does not cover the following

- Operation of the system
- IControl Router Configuration
- Creation of Complex web pages using Java Script
- Integration of SNMP monitored devices into your web pages

(ICON505) ICONTROL WEB PAGE INTEGRATION



This course introduces the IControl user to the integration of the system. It allows an integration engineer to use IControl Web Creator software to create, modify and test custom designed web pages

- **Length:** 35 hours (Five days)
- **Prerequisite:** ICON405
- **Applies to:** IControl Appserver
- **Versions :** IControl V3.0 and up



GOALS

After completing this course you will be able to:

- Understand the physical components of the IControl System
- Create web pages and Sites
- Understand the purposes and uses of Java scripting
- Use SNMP to communicate with Devices
- Create complex custom WebPages
- Use complex GUI functions in ICW
- Create and Modify Widgets for use in IControl web pages
- Troubleshooting tips and tricks

ABOUT THIS COURSE

This course includes the following materials:

- All current User manuals (PDF)
- Course Material (Printed)
- Final Exam and Quizzes (Printed)
- Training Evaluation (Printed)
- Exercises and handouts (Printed)
- Hands on and Practical exercises

This is a complete class that covers installation and use of an IControl system. There are typically one or two days of theory and 3 days of practical hands on time. It is only available at Miranda Technologies Corporate headquarters in Montreal Quebec Canada

Miranda iTX Operator

This course is relevant to iTX Operators as it provides a system-wide overview of a Miranda iTX System. It consists of several sections that offer every user a basic understanding of terminology, taking into account each delegate's role. It covers an overview of the different layouts available on a Miranda iTX Desktop to ensure that all users have a basic knowledge and can navigate the system. The course is designed to provide a competency in working with schedules and items on air and offline on a day to day basis. This module also includes some basic troubleshooting.



Consolidation in the form of a corrupt schedule and quiz will be conducted at the end of the course. Further practice is essential for students to reinforce what they have learned.

Pre-requisites: Basic Transmission Operator level knowledge



- **Length:** 3 days, 4 with Ingest
- **Prerequisite:** None
- **Applies to:** Miranda iTX
- **Versions :** All current versions

GOALS

By the end of this course you will:

- Understand iTX terminology
- Understand the basics of an iTX desktop, output server, media watcher, database, framework server and encode server
- Navigate the iTX Desktop
- Navigate schedule layouts effectively
- Preview and mark-up video clips
- Search for content and create a schedule
- Edit schedules and schedule items
- Monitor schedules
- Load, save and control schedules
- Manually switch live items to air

ABOUT THIS COURSE

This course includes the following materials:

- All current User manuals (PDF)
- Course Material (Printed)
- Training Evaluation (Printed)
- Exercises and handouts (Printed)

This class does not cover the following

- Installation of any of the systems
- Configuring of any of the systems
- Maintenance or administration of the systems

Miranda iTX Maintenance

This course is aimed at employees who will support, maintain, troubleshoot and are involved in Disaster Recovery of the system; it covers backend services, specific areas of configuration, upgrading and troubleshooting. Consolidation in the form of a system sabotage and quiz will be conducted at the end of the course. Further practice is essential for students to reinforce what they have learned.

Pre-requisites: This module is aimed specifically at a technical level. It is also highly advisable that the attendees have administrator knowledge of Windows and knowledge of Microsoft SQL is also desirable.



- **Length:** 4 days, 5 with Ingest
- **Prerequisite:** None
- **Applies to:** Miranda iTX
- **Versions :** All current versions

GOALS

After completing this course you will:

- Understand the iTX system Architecture
- Understand the workings of all services
- Upgrade parts of the system
- Configure the system
- Troubleshoot the system
- Recover the system in the event of failure

ABOUT THIS COURSE

This course includes the following materials:

- All current User manuals (PDF)
- Course Material (Printed)
- Training Evaluation (Printed)
- Exercises and handouts (Printed)

This class does not cover the following

- Installation of any of the systems

(OXTE101) OXTEL MASTERCONTROL OPERATION



This course introduces the Oxtel user to the operations of the system. It allows an operator to manipulate the Oxtel PresStation or PM100 panels

- **Length:** 7 hours (one day)
- **Prerequisite:** None
- **Applies to:** Oxtel PresStation PM100
- **Versions :** Oxtel V4.0 and up



GOALS

After completing this course you will be able to:

- Understand the physical components of the Oxtel System
- Using Oxtel PresStation
- Selecting sources
- Executing Transitions
- Viewing and activating on screen graphics
- Setting parameters on panel
- Understanding audio functions
- Activating DVE moves
- Basic operational functionality

ABOUT THIS COURSE

This course includes the following materials:

- All current User manuals (PDF)
- Course Material (Printed)
- Final Exam and Quizzes (Printed)
- Training Evaluation (Printed)
- Exercises and handouts (Printed)
- Hands on and Practical exercises

*This class does **not** cover the following*

- Configuring of an Oxtel system (The ability to create custom user configurations)
- Oxtel Router Configuration
- Maintenance or administration of the system
- Trouble shooting, problem solving or reading of system log files
- Integration of new software or hardware into an existing system

(OXTE202) OXTEL ADMINISTRATION



This course introduces the Oxtel user to the administration of the system. It allows understanding of Oxtel more complex features including Configuration and management of system information

- **Length:** 14 hours (Two days)
- **Prerequisite:** OXTE101 recommended
- **Applies to:** Oxtel PresMaster system
- **Versions :** Oxtel V4.0 and up



GOALS

After completing this course you will be able to:

- Understand the physical components of the Oxtel System
- Creating Oxtel system files (PresConfig)
- Router configurations
- Customized audio mix files
- Creating GPI Macro's
- Creating and editing DVE moves
- Graphic creation using "MCS"
- Managing content using Xplorer

ABOUT THIS COURSE

This course includes the following materials:

- All current User manuals (PDF)
- Course Material (Printed)
- Final Exam and Quizzes (Printed)
- Training Evaluation (Printed)
- Exercises and handouts (Printed)
- Hands on and Practical exercises

*This class does **not** cover the following*

- Maintenance of the system
- Trouble shooting, problem solving or reading of system log files
- Integration of new software or hardware into an existing system

(OXTE302) OXTEL MAINTENANCE



This course introduces the Oxtel user to the maintenance of the system. It allows understanding of how to prepare redundant configurations and ensure the proper functionality of the system

- **Length:** 14 hours (Two days)
- **Prerequisite:** OXTE202
- **Applies to:** Oxtel PresStation system
- **Versions :** Oxtel V4.0 and up



GOALS

After completing this course you will be able to:

- Understand the physical components of the Oxtel System including
- Use and understand web-based interfaces
- Creating Database and Web Page Backups
- Backing up the system (complete)
- Restoring a backup file
- Upgrading a system
- Finding and reading system log files
- Deep understanding of PresMaster System architecture
- Troubleshooting tips and tricks

ABOUT THIS COURSE

This course includes the following materials:

- All current User manuals (PDF)
- Course Material (Printed)
- Final Exam and Quizzes (Printed)
- Training Evaluation (Printed)
- Exercises and handouts (Printed)
- Hands on and Practical exercises

*This class does **not** cover the following*

- Operation of the system
- Administration of Programmable user functions

(OXTE405) OXTEL INTEGRATION



This course introduces the Oxtel user to the integration of the system. It allows an integration engineer to ensure that the Oxtel system is properly installed, used and serviced for reliability

- **Length:** 35 hours (Five days)
- **Prerequisite:** OXTE202 and OX302
- **Applies to:** Oxtel PresStation system
- **Versions :** Oxtel V4.0 and up



GOALS

After completing this course you will be able to:

- Understand the physical components of the Oxtel System
- Administration of Programmable user functions
- Operating the system
- Allowing access to parameters
- Use and understand Web configuration interfaces
- Backing up the system (complete)
- Restoring a backup file
- Saving and configuring KX Databases
- Upgrading a system
- Finding and reading log files
- Hands on Set up of a system
- Hands on troubleshooting
- Hands on Problem solving

ABOUT THIS COURSE

This course includes the following materials:

- All current User manuals (PDF)
- Course Material (Printed)
- Final Exam and Quizzes (Printed)
- Training Evaluation (Printed)
- Exercises and handouts (Printed)
- Hands on and Practical exercises

This is a complete class that covers installation and use of an Oxtel system. There are typically one or two days of theory and 3 days of practical hands on time. It is only available at Miranda Technologies Corporate headquarters in Montreal Quebec Canada

(VERT101) VERTIGO XPLOER and XPLAY OPERATION



This course introduces the VERTIGO user to the operations of the system. It allows an operator to manipulate the Vertigo XPLOER and XPLAY software

- **Length:** 7 hours (one day)
- **Prerequisite:** None
- **Applies to:** Vertigo XPLOER and XPLAY
- **Versions :** Vertigo V4.0 and up



GOALS

After completing this course you will be able to:

- Understand the use of the Intuition XG;
- Understand Xplorer Concepts and uses
- Use Xplorer Tool Bars
- Use Xplorer previewing Audio/Video clips
- Xplorer Search Tools
- Create and modify Xplay Playlists
- Xplay GUI Interface
- Xplay Asset Browser
- Xplay Buttons

ABOUT THIS COURSE

This course includes the following materials:

- All current User manuals (PDF)
- Course Material (Printed)
- Final Exam and Quizzes (Printed)
- Training Evaluation (Printed)
- Exercises and handouts (Printed)
- Hands on and Practical exercises

*This class does **not** cover the following*

- Configuring of an Vertigo system (The ability to create custom user configurations)
- Vertigo XSTUDIO Configuration
- Maintenance or administration of the system
- Trouble shooting, problem solving or reading of system log files
- Integration of new software or hardware into an existing system

(VERT202) VERTIGO SOFTWARE CONTENT ENTRY



This course introduces the Vertigo user to the content entry portion of the system. It allows understanding of Vertigo more complex features including Configuration and management content

- **Length:** 14 hours (Two days)
- **Prerequisite:** VERT101 recommended
- **Applies to:** Vertigo system
- **Versions :** Vertigo V4.0 and up



GOALS

After completing this course you will be able to:

- Template selection
- Manual entry & selection (text, images)
- Work order creation
- Playlist import
- Playlist creation/modification
Preview
- Xbuilder
- Xnews (MOS)
- Xplay (for operations)
- Xpanel (for operations)

ABOUT THIS COURSE

This course includes the following materials:

- All current User manuals (PDF)
- Course Material (Printed)
- Final Exam and Quizzes (Printed)
- Training Evaluation (Printed)
- Exercises and handouts (Printed)
- Hands on and Practical exercises

This class does not cover the following

- Maintenance of the system
- Trouble shooting, problem solving or reading of system log files
- Integration of new software or hardware into an existing system

(VERT303a) XSTUDIO CONTENT CREATION FOR ARTISTS



This course introduces the Vertigo user to the content creation (XSTUDIO) portion of the system. It allows understanding of Vertigo's more complex features including creation, configuration and management of content

- **Length:** 24hours (Three days)
- **Prerequisite:** VERT101 recommended
- **Applies to:** Vertigo system
- **Versions :** Vertigo V4.0 and up



GOALS

After completing this course you will be able to:

- Scene creation
- Simple template creation
- Object transitions
- Ingest & Publish
- Work order fulfillment
- Data linking
- Basic Logic
- Crawls
- Advanced Asset Management
- Data manipulation
- Animations
- Business logic

ABOUT THIS COURSE

This course includes the following materials:

- All current User manuals (PDF)
- Course Material (Printed)
- Final Exam and Quizzes (Printed)
- Training Evaluation (Printed)
- Exercises and handouts (Printed)
- Hands on and Practical exercises

*This class does **not** cover the following*

- Operation of the system
- Administration of Programmable user functions

(VERT303m) VERTIGO Maintenance



This course introduces the Vertigo user to maintenance of the system. It allows an integration engineer to ensure that the Vertigo system is properly installed, used and serviced for reliability

- **Length:** 24 hours (three days)
- **Prerequisite:** None
- **Applies to:** Vertigo system
- **Versions :** Vertigo V4.0 and up



GOALS

After completing this course you will be able to:

- Understand the physical components of the Vertigo System
- Administration of Programmable user functions
- Operating the system
- Allowing access to parameters
- Use and understand Web configuration interfaces
- Backing up the system (complete)
- Restoring a backup file
- Saving and configuring KX Databases
- Upgrading a system
- Finding and reading log files
- Hands on Set up of a system
- Hands on troubleshooting
- Hands on Problem solving

ABOUT THIS COURSE

This course includes the following materials:

- All current User manuals (PDF)
- Course Material (Printed)
- Final Exam and Quizzes (Printed)
- Training Evaluation (Printed)
- Exercises and handouts (Printed)
- Hands on and Practical exercises

*This class does not cover complex graphic creation or logic building. For these and other advanced concept classes you can refer to the class named **VERT505***

(VERT405) VERTIGO INTEGRATION



This course introduces the Vertigo user to the integration of the system. It allows an integration engineer to ensure that the Vertigo system is properly installed, used and serviced for reliability

- **Length:** 35 hours (Five days)
- **Prerequisite:** None
- **Applies to:** Vertigo system
- **Versions :** Vertigo V4.0 and up



GOALS

After completing this course you will be able to:

- Understand the physical components of the Vertigo System
- Administration of Programmable user functions
- Operating the system
- Allowing access to parameters
- Use and understand Web configuration interfaces
- Backing up the system (complete)
- Restoring a backup file
- Saving and configuring KX Databases
- Upgrading a system
- Finding and reading log files
- Hands on Set up of a system
- Hands on troubleshooting
- Hands on Problem solving

ABOUT THIS COURSE

This course includes the following materials:

- All current User manuals (PDF)
- Course Material (Printed)
- Final Exam and Quizzes (Printed)
- Training Evaluation (Printed)
- Exercises and handouts (Printed)
- Hands on and Practical exercises

This is a complete class that covers installation and use of an Vertigo system. There are typically one or two days of theory and 3 days of practical hands on time. It is only available at Miranda Technologies Corporate headquarters in Montreal Quebec Canada

(NVRT101) NVISION ROUTER CONTROL PANEL OPERATION



This course introduces the NVISION user to the operations of the system. It allows an operator to manipulate the various router control panels

- **Length:** 7 hours (one day)
- **Prerequisite:** None
- **Applies to:** NVISION Router Control Panels
- **Versions :** NVISION V4.0 and up



GOALS

After completing this course you will be able to:

- Understand the physical components of the NVISION Router Control System
- Using the Router control panels
- Selecting sources and destinations
- Executing Source switching
- Viewing and using on screen menus
- Setting parameters on panel
- Understanding audio and video control functions
- Basic operational functionality

ABOUT THIS COURSE

This course includes the following materials:

- All current User manuals (PDF)
- Course Material (Printed)
- Final Exam and Quizzes (Printed)
- Training Evaluation (Printed)
- Exercises and handouts (Printed)
- Hands on and Practical exercises

*This class does **not** cover the following*

- Configuring of an NVISION Router control system (The ability to create custom user configurations)
- NVISION Router Configuration
- Maintenance or administration of the system
- Trouble shooting, problem solving or reading of system log files
- Integration of new software or hardware into an existing system

(NRTC302) NVISION ROUTER MAINTENANCE



This course introduces the NVISION user to the maintenance of the system. It allows understanding of how to prepare redundant configurations and ensure the proper functionality of the system

- **Length:** 14 hours (Two days)
- **Prerequisite:** none
- **Applies to:** NV9000 and 915 system
- **Versions :** NVISION V5.0 and up



GOALS

After completing this course you will be able to:

- Understand the physical components of the NVISION NV9000 System
- Use and understand software interfaces
- Creating Database configuration Backups
- Backing up the system (complete)
- Restoring a backup file
- Upgrading a system
- Finding and reading system log files
- Troubleshooting tips and tricks
- Finding and reading log files
- Hands on Set up of a system
- Hands on troubleshooting
- Hands on Problem solving

ABOUT THIS COURSE

This course includes the following materials:

- All current User manuals (PDF)
- Course Material (Printed)
- Final Exam and Quizzes (Printed)
- Training Evaluation (Printed)
- Exercises and handouts (Printed)
- Hands on and Practical exercises

This class does not cover the following

- Operation of the system
- Administration of Programmable user functions

(NVRT405) NVISION ROUTER CONTROL INTEGRATION



This course introduces the NVISION user to the integration of the system. It allows an integration engineer to ensure that the NVISION system is properly installed, used and serviced for reliability

- **Length:** 35 hours (Five days)
- **Prerequisite:** None
- **Applies to:** NV9000 and 915 system
- **Versions :** Nvision 5 and up



GOALS

After completing this course you will be able to:

- Understand the physical components of the NVISION NV9000 System
- Administration of Programmable user functions
- Operating the system
- Allowing access to parameters
- Use and understand software configuration interfaces
- Backing up the system (complete)
- Restoring a backup file
- Upgrading a system
- Finding and reading log files
- Hands on Set up of a system
- Hands on troubleshooting
- Hands on Problem solving

ABOUT THIS COURSE

This course includes the following materials:

- All current User manuals (PDF)
- Course Material (Printed)
- Final Exam and Quizzes (Printed)
- Training Evaluation (Printed)
- Exercises and handouts (Printed)
- Hands on and Practical exercises

This is a complete class that covers installation and use of an NVISION Routing system. There are typically one or two days of theory and 3 days of practical hands on time. It is only available at Miranda Technologies Corporate headquarters in Montreal Quebec Canada

(NVMC101) NVISION MASTERCONTROL OPERATION



This course introduces the NVISION user to the operations of the system. It allows an operator to manipulate the CECP or FECP panels

- **Length:** 7 hours (one day)
- **Prerequisite:** None
- **Applies to:** NV5100mc with CECP or FECP
- **Versions :** NVISION V4.0 and up



GOALS

After completing this course you will be able to:

- Understand the physical components of the NV5100mc System
- Using CECP and FECP
- Selecting sources
- Executing Transitions
- Viewing and activating on screen graphics
- Setting parameters on panel
- Understanding audio functions
- Activating DVE moves
- Basic operational functionality

ABOUT THIS COURSE

This course includes the following materials:

- All current User manuals (PDF)
- Course Material (Printed)
- Final Exam and Quizzes (Printed)
- Training Evaluation (Printed)
- Exercises and handouts (Printed)
- Hands on and Practical exercises

*This class does **not** cover the following*

- Configuring of an NVISION NV5100mc system (The ability to create custom user configurations)
- NVISION Router Configuration
- Maintenance or administration of the system
- Trouble shooting, problem solving or reading of system log files
- Integration of new software or hardware into an existing system

(NVMC302) NVISION NV5100mc MAINTENANCE



This course introduces the NVISION user to the maintenance of the system. It allows understanding of how to prepare redundant configurations and ensure the proper functionality of the system

- **Length:** 14 hours (Two days)
- **Prerequisite:** NVMC101
- **Applies to:** NV5100mc with CECP or FECF
- **Versions :** NVISION V4.0 and up



GOALS

After completing this course you will be able to:

- Understand the physical components of the NVISION System including the panels
- Use and understand software interfaces
- Creating Database configuration Backups
- Backing up the system (complete)
- Restoring a backup file
- Upgrading a system
- Finding and reading system log files
- Troubleshooting tips and tricks

ABOUT THIS COURSE

This course includes the following materials:

- All current User manuals (PDF)
- Course Material (Printed)
- Final Exam and Quizzes (Printed)
- Training Evaluation (Printed)
- Exercises and handouts (Printed)
- Hands on and Practical exercises

*This class does **not** cover the following*

- Operation of the system
- Administration of Programmable user functions

(NVMC405) NVISION MASTER CONTROL INTEGRATION



This course introduces the NVISION user to the integration of the system. It allows an integration engineer to ensure that the NVISION system is properly installed, used and serviced for reliability

- **Length:** 35 hours (Five days)
- **Prerequisite:** None
- **Applies to:** NV5100mc system
- **Versions :** Nvision 5 and up



GOALS

After completing this course you will be able to:

- Understand the physical components of the NV5100 System
- Administration of Programmable user functions
- Operating the system
- Allowing access to parameters
- Use and understand software configuration interfaces
- Backing up the system (complete)
- Restoring a backup file
- Upgrading a system
- Finding and reading log files
- Hands on Set up of a system
- Hands on troubleshooting
- Hands on Problem solving

ABOUT THIS COURSE

This course includes the following materials:

- All current User manuals (PDF)
- Course Material (Printed)
- Final Exam and Quizzes (Printed)
- Training Evaluation (Printed)
- Exercises and handouts (Printed)
- Hands on and Practical exercises

This is a complete class that covers installation and use of an NVISION NV5100mc system. There are typically one or two days of theory and 3 days of practical hands on time. It is only available at Miranda Technologies Corporate headquarters in Montreal Quebec Canada

(MIRA101) Miranda Introduction to products

This course introduces the student to the range of products offered at Miranda Technologies. It focuses on providing a brief overview all of the product vectors as well as allowing an opportunity to see and try the systems



- **Length:** 4 hours (half day)
- **Prerequisite:** None
- **Applies to:** All Miranda products
- **Versions :** All current versions



GOALS

After completing this course you will:

- Understand the Product ranges;
- Understand what each product does
- Know who uses the products
- See examples of product applications
- Have an understanding of each product line
- Have an opportunity to see the products in action

ABOUT THIS COURSE

This course includes the following materials:

- All current User manuals (PDF)
- Course Material (Printed)
- Training Evaluation (Printed)
- Exercises and handouts (Printed)

This class does not cover the following

- Configuring of any of the systems
- Maintenance or administration of the systems
- Trouble shooting, problem solving or reading of system log files
- Integration of new software or hardware into an existing system